



Nelson & Nelson Mfg.
5210 Stadium Blvd, Suite C
Jonesboro AR 72404
870-268-6393 : Cell 219-1019

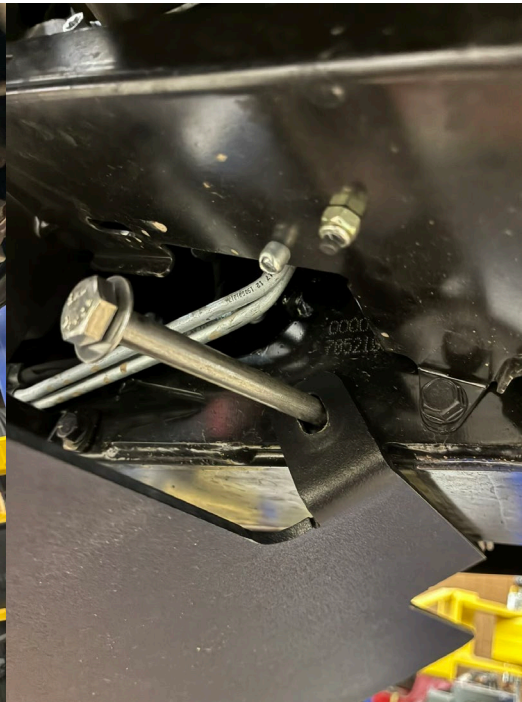
Installation Instructions 12-18-25

Model CAN-RSKP

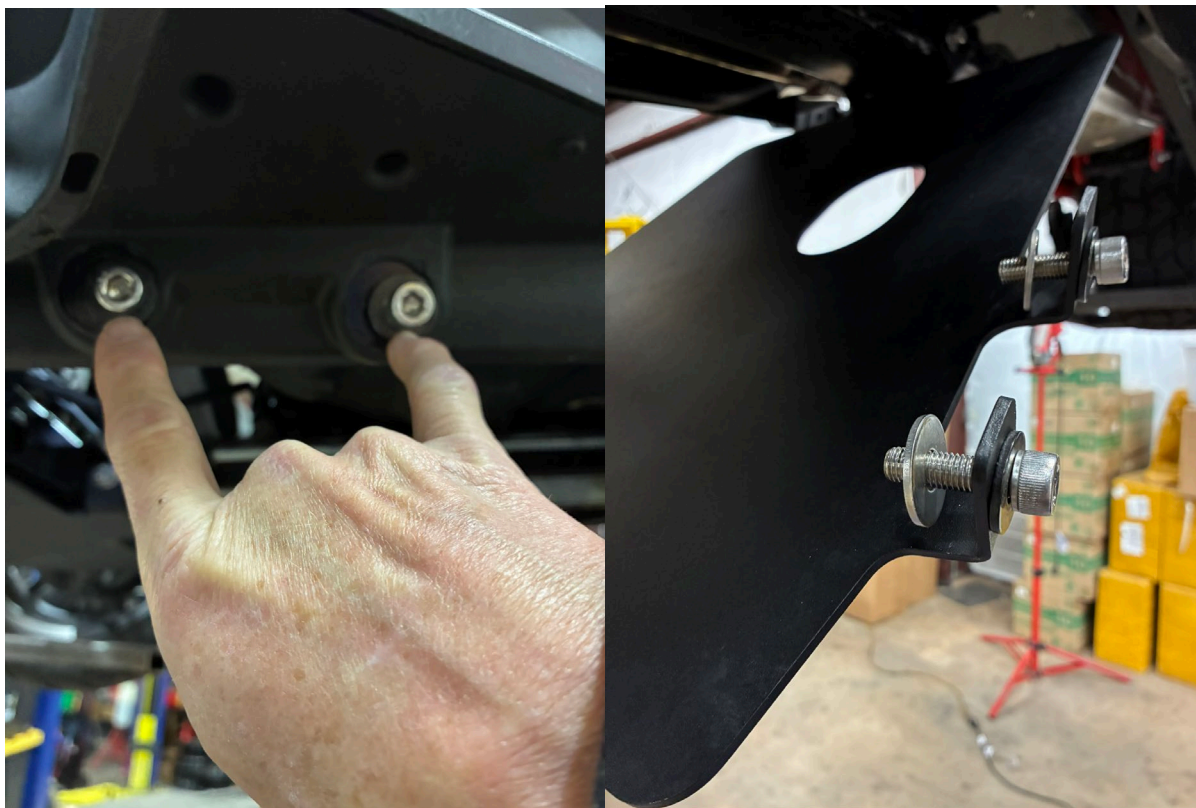
Steps needed to install your Canyon rear lower skid plate. For 2025+ Canyon Models.



1.- To install the Rear Skid Plate, locate the hole circled in red on the lower photo. Take the supplied 5/16" bolt with the supplied washer and lift the skid plate rear U-Shaped mount and place over the frame as shown below. Run the bolt and washer through the plate and place the flanged head nut on the bolt and tighten light to allow the plate to hang from the frame.



2.- Once the skid plate is in position take the 8mm Allen wrench and remove the two socket head bolts that secure the plastic deflector on each side. Next take the OEM bolts you just removed and take the supplied washer spacer and place the bolts through the skid plate as shown below. The washer spacer goes on the inside of the skid plate. These plastic deflectors will come off at this point and can be set aside.



3.- Tilt the skid plate upwards and take the deflector. One side at a time and align the plate mount holes with the deflector holes as shown below. The washer spacer will be between the skid plate and the deflector. Take the 8mm Allen wrench and tighten the socket head bolts slightly. Go to the opposite side and do the same. Once all 4 bolts are in place align the skid plate and start to tighten down the 4 bolts. If the front skid plate is installed, this rear plate will tighten up and be raised above the level of the front skid plate to avoid anything from catching on this rear skid plate. Snug down the 4 bolts down ago to the rear of the plate and use two ½" wrench and tighten down the rear hanger bolt.



Your new Rear Skid Plate is now Installed!

We thank you for purchasing our Canyon Rear Skid Plate. Today we know the need for accessories for your Canyon, and we have solved that demand with a stylish system that compliments the design of your Canyon@!