



Nelson & Nelson Mfg.
5210 Stadium Blvd, Suite C
Jonesboro AR 72404
870-268-6393 : Cell 219-1019

Installation Instructions 6-10-25

Model CAN-MBTKT

Canyon Bluetooth Audio System kit

Steps needed to install your Canyon Bluetooth Audio System with 12-Volt Docking Station. For all Canyon Models



1.- First remove all 4 screws that fasten the upper windshield using a T-25 Torx wrench. Make sure to capture the washer with each screw.

Next remove the upper screws that hold on the lower windshield with the same t-25 wrench.



2.- Once both screws are removed take the speaker mount bracket as shown below and lay it over the lower windshield and install the two screws through the metal mount plate each side and secure in place. Take a speaker, run the cable through the hole and mount the speaker to the mount with the supplied screws on the speaker. Do this for both speakers.



3.-Next remove the left & right-side upper access panels as shown below to access push pins.



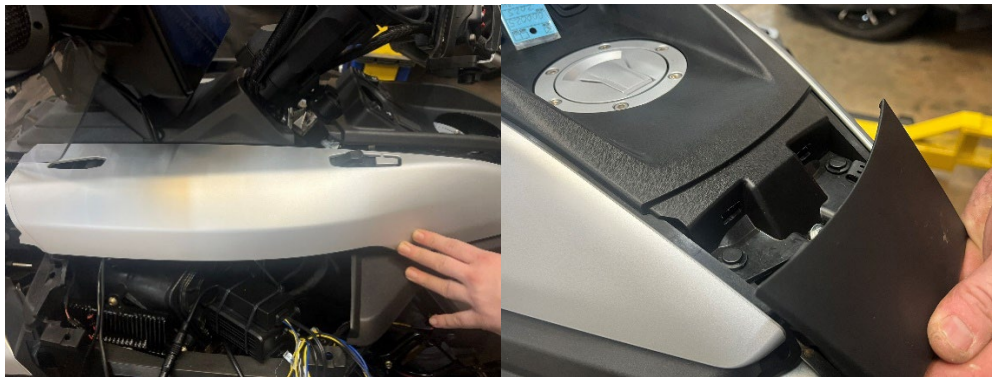
4.-Next remove the left side lower panel. Remove the driver seat first to allow access to screws. With a T-30 wrench remove the lower screw as shown. Remove this lower black panel by sliding it to the rear of the Canyon.



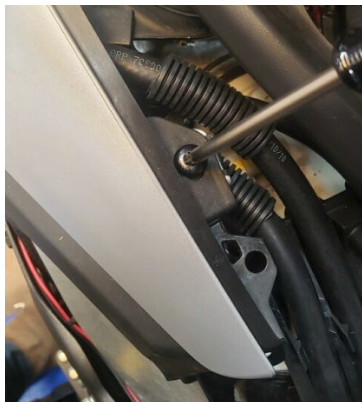
5.-Then remove the two lower and one upper screw using the T-30 wrench. Then remove the left side only upper push pin. Then to remove the upper left side panel slide forward to release then remove.



6.-Then remove the left side top panel below. You will need to remove the rail first by using a T-25 Torx wrench to remove the screw in the top back side of the rail. Next lift this rear center console panel as shown below. Using an 8mm socket remove this bolt. Remove the two push pins.



7.-Then remove the round plastic collar around the key location and then lift-up the center plastic console panel. This allows access to the upper left top panel bolt below. Remove that screw using the T-30 Wrench shown below.



8.- Remove the front hood. Next remove the two push pins, one located each side of the front plastic light cover. Then remove the light cover.



9.- Look under the upper left side top panel for these two T-30 Torx screws and then remove them. Once removed you can remove the top left panel cover.



10.- Next install the docking station with the instructions included.

11.-Next take the speaker wire from the right-side speaker and run it as shown along the underside of the metal mount. Run it to the left speaker area. Take the left & right speaker wire and combine them. Use the supplied wire ties to secure them to the mount. Then take both wires with a wire tie and run down the die of the screen mount as shown. This area has a cut out in the plastic frame below the top cover so that the wires can run through.



12.- Take the amp module with the speaker wires rolled up as shown below and secure them within this area behind the factory wiring harness. This space will hold the amp module in place. Once the Docking Station is installed take the control module connector and plug it into the plug supplied by the amps control module. Then plug in the speaker wires to the amp module and make sure they are plugged in, left to left & right to right. Once the speaker wires and control module are plugged in take the power red wire and black negative wire and run to the battery location.



13.- Remove the screws from the battery terminals and install the red wire to positive and the black to negative. This will allow the sound system to always work. The canyon does not have to be turned on.



14.- Test your system by holding down the upper left power button. It will come on and flash blue until you pair it with your phone etc.



Your new Audio system is now installed. Reassembly the Canyon in reverse of how it was disassembled.

We thank you for purchasing one of our Canyon Products. Today we know the need for accessories that provide a higher level of comfort while riding and we have solved that demand with a stylish system that compliments the design of your Canyon@!

spyderextras.com



Nelson & Nelson Mfg.
5210 Stadium Blvd, Suite C
Jonesboro AR 72404
870-268-6393 : Cell 219-1019

Installation Instructions 6-12-25

Model CAN-1U12ADJ
Patented

Dual 12 volt (2) 2.1 Amp USB Sockets (1) 12 Volt

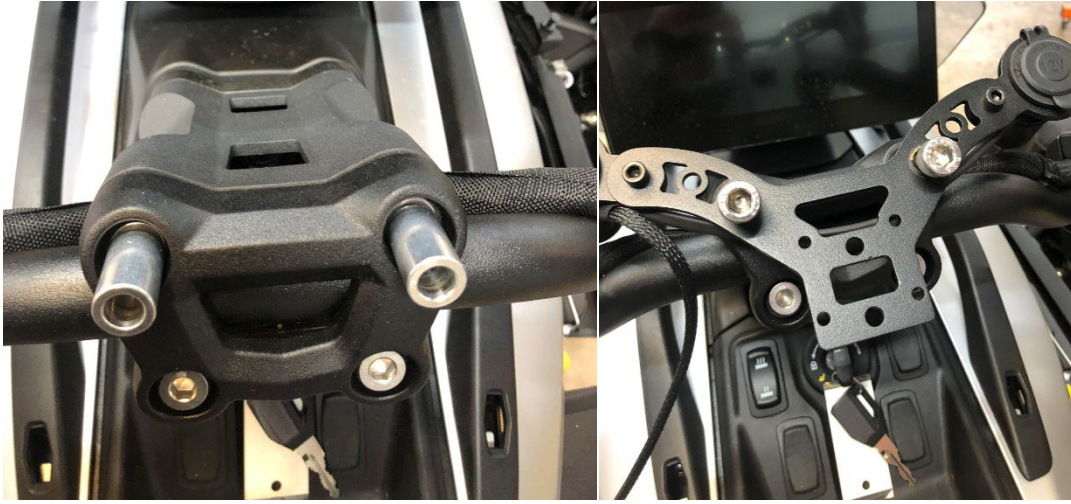
Steps needed to install your 12-volt power station for 2025+ Canyon Models



1.- Remove the top two socket head bolts from the center steering column using a 7mm Allen wrench or socket. There is a total of 4 bolts remove only the top two bolts. When removing them please keep the two washers from the existing bolts.



2.-With the supplied new socket head bolts and aluminum spacers, place a spacer in each hole on the steering wheel. Be gentle in making sure they stay in position. Take the two new socket head bolts and washers using 8mm Allen wrench, apply medium strength Loctite (Blue Color) to lower ½ of the threads to secure once you tighten down firmly to manufactures specifications.



3.-Your Canyon CAN-1U12ADJ, 12-volt power station is pre-wired at the 12-volt sockets. You will need to connect to the accessory plug on the LEFT side aux power supply plug. First remove the panels as shown below. Squeeze in on these two tabs to remove this access panel. Remove the panel. Do the same for the panel on the opposite side.

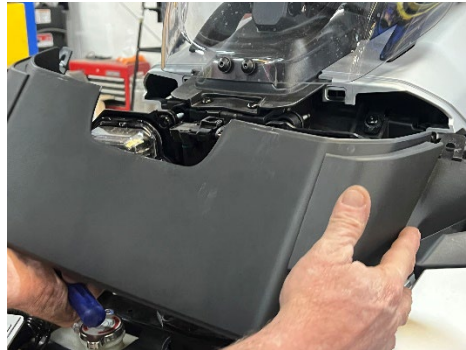


4.-Next remove the two push pins one on each side as shown below. Then locate the front panel below and remove the two metal keepers and then remove this panel.

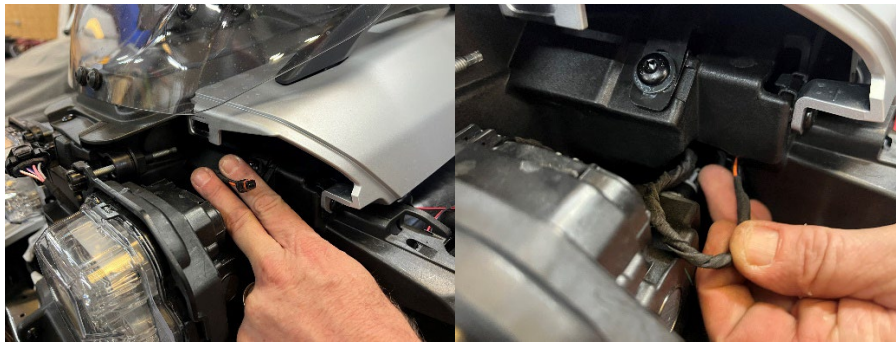




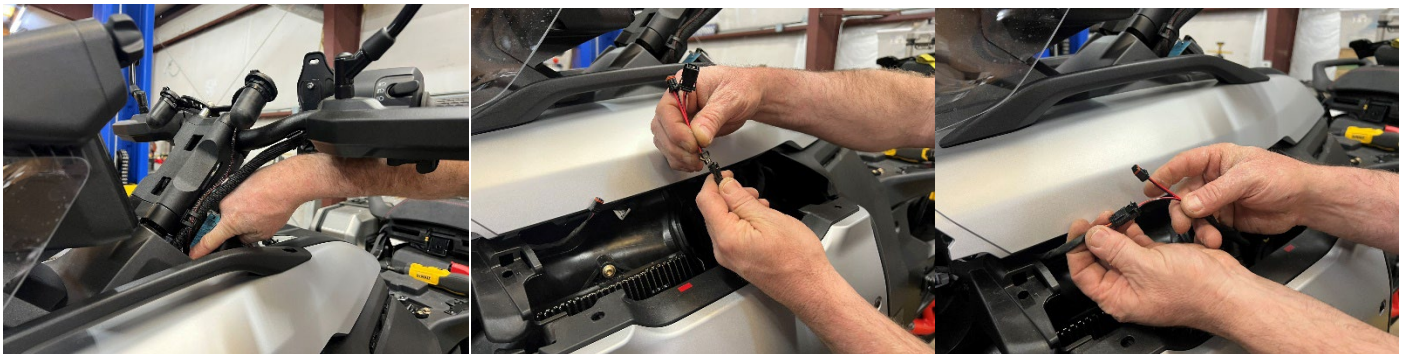
5.- Once the panel is removed then grab the LED headlight case and remove this.



6.- Look inside on as shown and located the factory accessory plug. Once located direct the plug wire through the hole in the plastic as shown.



7.- Take the wiring harness from the docking station and run as shown to this open area. You can see how it runs down the factory harness area on the steering shaft. Clip the harness in the retainer clip from the factory as shown. Then take the supplied Y-Adapter and plug that into your docking station harness and the female end into the factory power plug. This will allow you to still have an additional power plug for future accessories. Your docking station is now installed, and you will need to turn your Canyon on to test the power. The LED lights in the sockets will light blue.



Reinstall all panels in reverse of how you disassembled them.

We thank you for purchasing one of our 12-volt power stations. Today we know the need for 12-volt power for accessories, and we have solved that demand with a stylish system that compliments the design of your Canyon®!