



Nelson & Nelson Mfg.
5210 Stadium Blvd, Suite C
Jonesboro AR 72404
870-268-6393 : Cell 219-1019

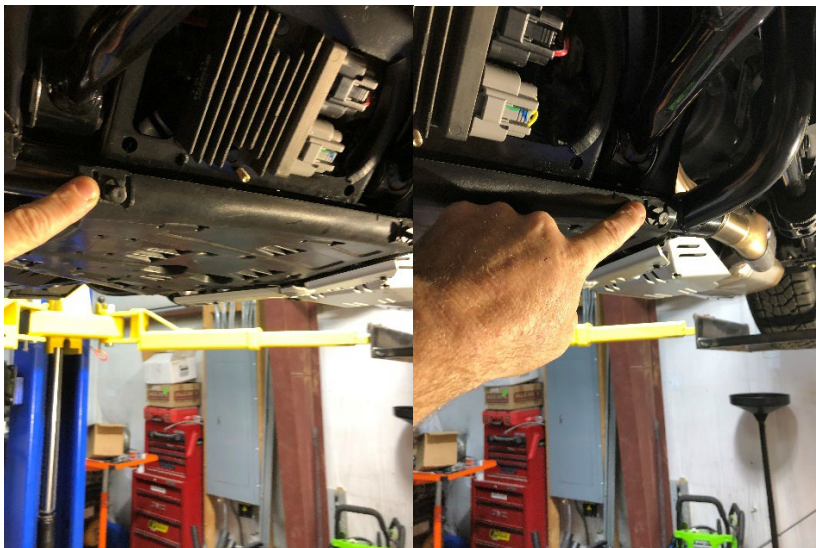
Installation Instructions 11-1-22

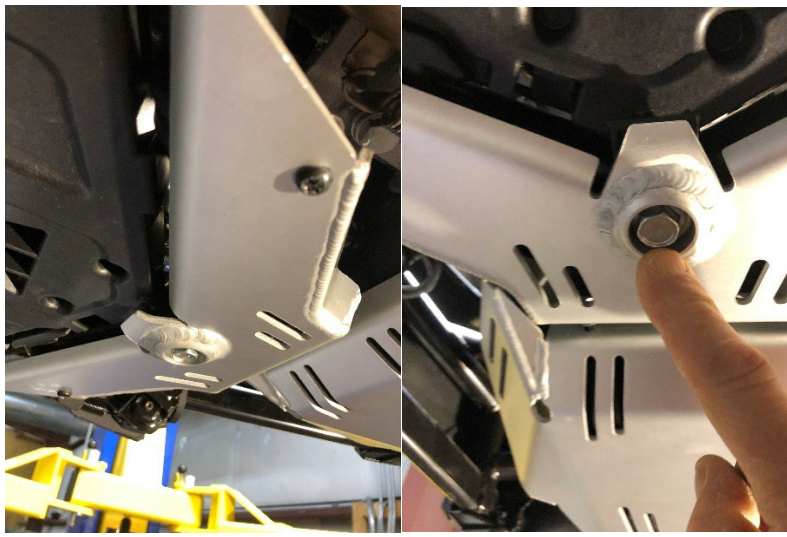
Model RYK-SKD
Ryker Skid Plate

**Steps needed to install your Ryker Full Skid Plate. For all
Ryker Models**



**1.- Remove all plastic or aluminum OEM skid covers from under the Ryker as shown below.
Applies to all Ryker models**

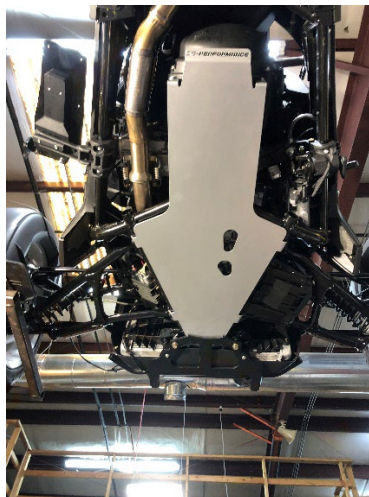




2.-Next take the new Skid Plate and locate it under the Ryker with the rear of the skid plate aligned with the two mounting tabs one each side as shown below. Install the supplied screw. Do the same for the opposite side. Then locate the remaining mounting tabs and use the supplied push pins to lock the skid place in lace



The result will look like this. Your new Skid Plate is now installed.



We thank you for purchasing one of our Ryker Products. Today we know the need for accessories that provide a higher level of comfort while riding and we have solved that demand with a stylish system that compliments the design of your Ryker®!

spyderextras.com