



**Nelson & Nelson Mfg.**  
5210 Stadium Blvd, Suite C  
Jonesboro AR 72404  
870-268-6393 : Cell 219-1019

Installation Instructions

**Model SF3-1U12S**

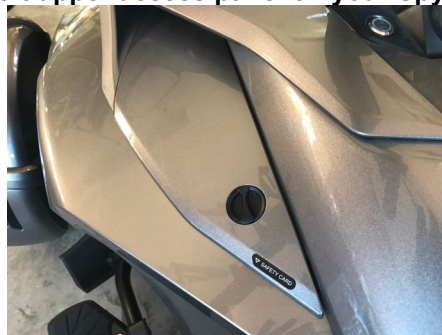
**Patent Pending**

**7-27-21**

**Dual 12 volt (2) 2.1 Amp USB Sockets (1) 12 Volt with two Lighted Switches**

## **Steps needed to install your 12-volt power station**

- 1.- Remove the top two socket head bolts from the center steering column. There are a total of 4 bolts remove only the top two bolts. When removing please keep the two washers from the existing bolts.
- 2.-With the supplied new socket head bolts and aluminum spacers, place a spacer in each hole on the steering wheel. Be gentle in making sure they stay in position. Take the two socket head bolts using the existing washers first on the new bolts then locate the new bolts in the middle holes each side from the center of the bracket. Apply medium strength Loctite (Blue Color) to lower ½ of the threads to secure once you tighten down firmly to manufactures specifications.
- 3.-Your SF3-1U12S, 12 volt power station is pre-wired at the 12 volt sockets. On your F3 / F3-T remove the left upper access panel on your Spyder®.



Inside secured to the factory wiring harness is a positive and negative accessory wire supplied by the factory.

- 4.- Use the two blue connectors supplied then crimp to the SF3-1U12S power red and black wire and to the positive and negative from the factory wiring accessory wires. Be sure to connect positive to positive and negative to negative. This factory accessory wire is already fused at the fused box.
- 5.-The SF3-1U12S is designed with holes to mount the optional XM radio & Universal Power Connect Dock Cradle. If you install this option, use the supplied screws to secure to metal brackets 4 holes.



**6.- If you use the Bluetooth option, provide a Receiving Unit located in the upper glove box and plug-in the male Stereo Jack and Power can be received from the Factory USB Jack provided.**

**7.- Supplied is a 1" Ram Mount stud ball to allow other Ram Mount products to be used. The ball may be mounted to the upper tab or center of the bracket. Install the ball with the supplied lock nut**

**8.- Power cables for Cell phone & XM Radio Docking Station can be supplied by your Dealer or [spyderextras.com](http://spyderextras.com) separately.**

**We thank you for purchasing of our 12-volt power stations. Today we know the needs for 12-volt power for accessories and we have solved that demand with a stylish system that compliments the design of your Spyder®!**

**[spyderextras.com](http://spyderextras.com)**